

044205

RECEIVED
LARAMIE COUNTY
CHEYENNE, WY.

CERTIFIED LAND CORNER RECORDATION

88 MAY 24 PM 1 57

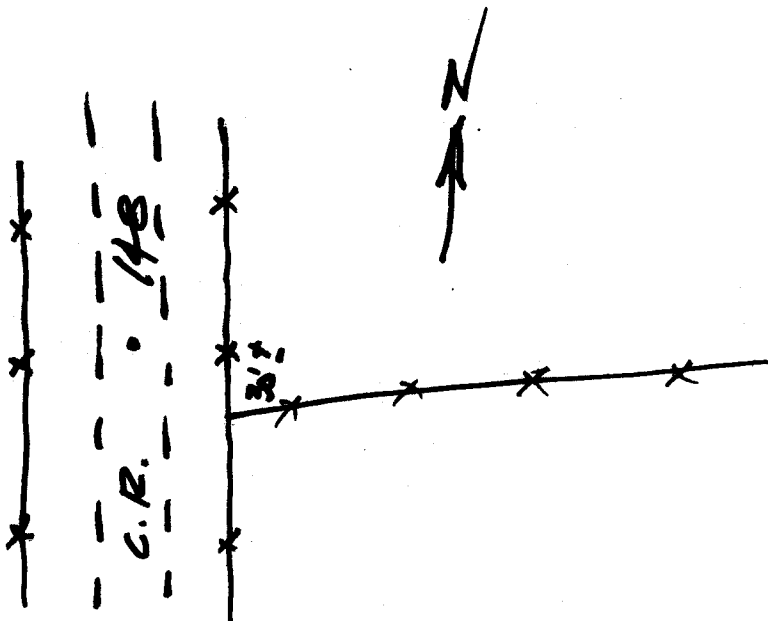
DESCRIPTION OF CORNER EVIDENCE FOUND, AND ORIGINAL RECORD (If known)

SET 5/8" REBAR
W 1/4 COR SEC. 30
T. 15N., R. 62 W.

DESCRIPTION OF MONUMENT AND ACCESSORIES ESTABLISHED TO PERPETUATE THE ORIGINAL LOCATION OF THIS CORNER:

E CO. RD. 148

SKETCH, WITH COURSE AND DISTANCE TO ADJACENT CORNER IF DETERMINED IN THIS SURVEY.
(May Sketch or Paste Reproduction on Reverse Side.)



I, DONALD M. HOPKINS certify that I have carefully performed or reviewed the work done on the diagrammed corner as reported on this recordation form and approve the same.

Donald M. Hopkins
Signature of Surveyor

558
Registration No.

STATE OF WYOMING,
Office of Clerk and Recorder,
County of _____

MAY 24 1988

This "corner record" was filed for record on the _____ day of _____, 19____, was noted on the cross-index plat and is assigned page No. _____, in book No. _____.

Janet C. Whitcomb
County Official

Cross Index No.	T-1	T. 15	R. 62	Mer.
				Mer.
				Mer.
				Mer.
				Mer.
				Mer.
				Mer.

BOOK 1260

1219